



# NIVEA SUN Yellowwave Beach Sports Venue 2012 Training Base Information Pack





THE RIGHT WORSHIPFUL THE MAYOR OF  
THE CITY OF BRIGHTON & HOVE

**Councillor Geoff Wells**

BRIGHTON & HOVE CITY COUNCIL  
THE MAYOR'S PARLOUR •  
TOWN HALL • BRIGHTON • BN1 1JA

Date: 10 December 2010

Ref: Mayor/PD

**Dear 2012 Olympic Team Organiser,**

I am delighted that our great city of Brighton & Hove, and Yellowwave Beachsports, are being considered as a potential base for your team during the 2012 Olympic and Paralympic Games in London. If both the city, and this fantastic venue are chosen, you can be assured of a very warm welcome from us all.

Brighton is recognised nationally and internationally as a friendly, unique, exotic and cosmopolitan destination, combining a seaside location with a vibrant city atmosphere.

Despite its compact dimensions, Brighton & Hove pulsates with the energy and vibrancy of a large city. It's not just the sea with a summer sparkle and superb sunsets, it's also the amazing shops, the extraordinary royal palace, the historic Lanes, the seaside pier, the fascinating museums, the elegant Regency architecture, a bustling marina, arts and culture galore and the colourful year round events that combine to create such a vibrant and special place.

We have a cornucopia of accommodation with thousands of rooms within fifteen minutes walk of the Yellowwave Beachsports venue, ranging from an impressive array of three, four and five star hotels, through to small hotels, guest houses and budget accommodation.

With Brighton being less than fifty minutes from London Victoria rail station and just ninety minutes from the London Olympic Village, getting to and from Brighton is easy. I am convinced that, if Brighton & Hove is chosen as the base for your Olympic team, the city as well as Yellowwave Beachsports will deliver a truly enjoyable, professional and memorable experience for you all.

I do sincerely hope that we have the pleasure of welcoming you to our wonderful city in 2012.

**Councillor Geoff Wells  
MAYOR OF BRIGHTON & HOVE**

Mayoral Secretary: Pat Dines (01273) 291223

e-mail: [pat.dines@brighton-hove.gov.uk](mailto:pat.dines@brighton-hove.gov.uk)

fax: (01273) 291221

## The venue

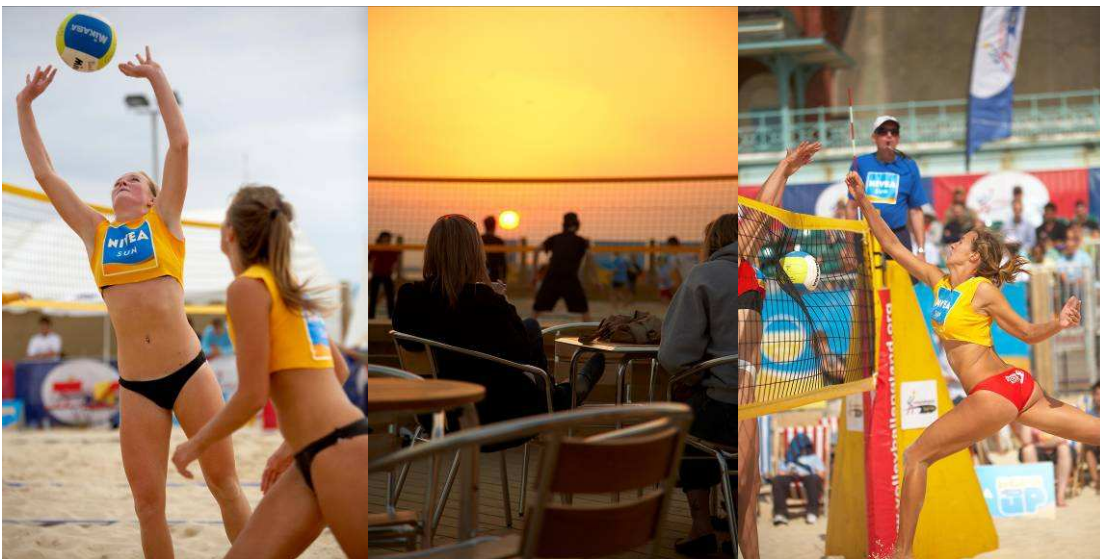
Yellowwave Limited is the operator of Nivea Sun Yellowwave Beach Sports Venue. Nivea Sun Yellowwave Beach Sports Venue is an official 2012 training venue and the UK's only permanent beach sports venue of its kind. It is situated on Brighton seafront, between the famous and expanding Brighton Marina and the Brighton Pier on the south coast of England. The venue is available for exclusive hire at certain times.

Beach Volleyball Space: 46m x 32m sand area providing:

**6 x training courts or**

**3 x courts with 5m surround or**

**2 x Olympic size courts**



## Playing Surface

Level, flattened sand to 40cm deep enclosed with surrounding boundary. Sand approved by Hutchenson on Sand, Canada as per FIVB handbook guidelines. 5cm wide lines (16x8m) coloured blue to contrast with sand colour.

## Lighting

The venue is flood lit – 300 lux, may be supplemented with extra lighting if required for night training subject to planning.



## Net System

Funtec (Olympic/FIVB approved permanent net system)

Fully adjustable for men's and women's net heights with antenna.



## Boundary

Venue is enclosed within wooden sleeper boundary (60cm above sand) joined onto Euroguard fencing supported by upright sleepers. Attached to the fencing are banners acting as wind breakers up to 2.25m.

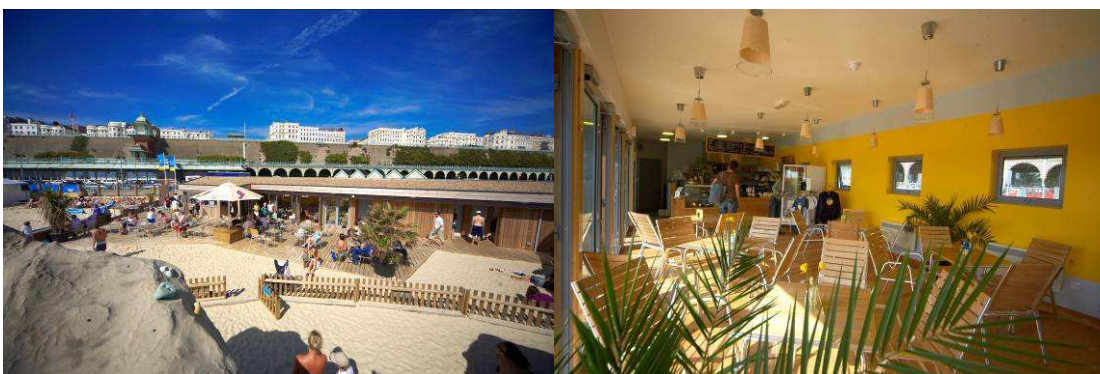


## Changing rooms

The venue has male and female changing rooms, 4 showers plus a disabled shower.

## Café and Bouldering Wall

The venue has a 3.5m high bouldering wall and a café with decked area offering healthy lunches, snacks and hot and cold drinks. The venue also has internet access.



## Hosting Experience

The Yellowwave team has had experience of running successful national and international events. Among other events, Nivea Sun Yellowwave Beach Volleyball Centre has hosted the Volleyball England Tour Finals and the UK Junior Championships in 2007. In Sept 2008 the venue hosted the UK's first FIVB Junior (U21) World Championships.



Yellowwave have organised:

- Ambre Solaire Beach Volleyball Championships 2005
- Lipton Ice Tea UK Footvolley Invitational 2005
- Sun Newspaper / Shark Brighton Beach Volleyball Championships 2006



- Lastminute.com UK Footvolley Championships 2006
- B&HCC Beach Volleyball 2012 Road show 2006
- Playing For Success Brighton Beach Soccer World Cup 2006
- Brighton & Hove Albion V Southampton Beach Soccer Match 2007
- Lamisil Footvolley International 2007
- Nivea Sun Ultimate Frisbee One Day Invitational 2007
- Nivea Sun Volleyball England National Juniors 2007 & 2008
- Nivea Sun Volleyball England Beach Tour Finals Sept 2007 & 2008
- SWATCH FIVB World U21 Junior Beach Volleyball Championships 2008 (host)
- Barefoot Open International Footvolley 2009
- Nivea Sun Beach Fest 2009

## **Yellowwave Philospfy**

The Yellowwave philosophy is reflected in everything we do. We bring the surf culture to sand, offering an alternative active beach lifestyle. We believe our actions should have an onward positive effect. Respecting others and respecting the environment is key to how we operate. Yellowwave is all about getting out there and having a go – getting sandy and having fun. We create a total beach sports experience, open to all.





## **Brighton & Hove City Council Hosting Experience**

Brighton & Hove has an international reputation for hosting sporting events and providing suitable accommodation, support training and competition venues. This experience includes: 1994 – stage of Tour de France, the first time it had been in the UK. 2000-01 England under 19 Rugby International, 2001-04 National Baseball Finals, 1993-1997 World Cup Windsurfing, 1998 England Netball Test Match v New Zealand, 2002-03 Kroneburg European Beach Soccer, 2000 Samsung Open Men’s Tennis and the FIVB World U21 Junior Championships 2008.

## **Additional Facilities**

Working with the Gatwick Diamond Venues (GDV) there are multiple facilities available for a range of Olympic disciplines for a squad to use. These can be viewed in the Gatwick Diamond Venues brochure or online at <http://trainingcamps.london2012.com/>

## **Universities**

Brighton & Hove has two universities; both offering their facilities to Olympic teams. The University of Sussex can provide a range of ancillary services and support facilities that any individual beach volleyball team may require. Two indoor sports halls – 36m x 18.3m, 29.8m x 18.3m, strength and conditioning facilities can also be provided here along with The Clinical Imaging Science Centre. It provides high quality services in Magnetic Resonance Imaging (MRI) and Computerised Tomography (CT). The Centre, managed by Brighton and Sussex Medical School, is staffed by an expert team of doctors and radiographers. It can provide a fast service to support athletes and support staff who require scanning for injuries or other conditions. The University of Sussex facilities, including accommodation of 720 rooms is 6km from Nivea Sun Yellowwave Beach Volleyball venue.

Brighton University is a nationally recognised centre for Sports Science and Sports Media, with extensive specialist knowledge and technical facilities. Brighton University Sports Science campus is situated in Eastbourne (approx 35 min drive) and can provide full access and support to any team based at a training/preparation camp or pre-event competition.



The city has an 8 lane athletics track accredited to IAAF standard. This facility is on site with a full health and fitness, and conditioning centre, and 3 court indoor tennis centre, offering a fully flexible training centre.

Both universities have a wide range of lecture rooms, conference facilities, meeting rooms and office space, which can be tailored to suit teams particular requirements.

### **David Lloyd Fitness Centre and Swimming Pool**

**(Less than 1km from beach volleyball venue)**

We are currently exploring the options available for teams to use the The David Lloyd Fitness Centre situated at Brighton Marina (15min' walk from Yellowwave). The centre offers excellent gym facilities with extra large free weights and weight machine area and state of the art training equipment including Power Plates and Nautilus Treadclimbers. The centre also has a 25m indoor swimming pool and wet spa, equipped with a sauna, steam room and whirlpool.

### **Accommodation**

Brighton boasts an excellent range of accommodation with over 10,000 bed spaces across the city, ranging from an impressive array of hotels, and design-led town house hotels through to small hotels, guest houses and budget accommodation.

Brighton & Hove also offers an ever increasing choice of accessible accommodation. Over 50 rooms across the city are fully adapted for use by disabled guests.

#### **Accommodation Costs**

Initial Visit – Complimentary, courtesy of Brighton & Hove City Council – subject to numbers/visit length and availability

#### **Approx costs during training camp stay**

- Campus accommodation: From £44.00 per night
- BB accommodation: Standard single rooms from £45.00  
Ensuite single rooms from £70.00  
Ensuite twin rooms from £90.00
- 3 star hotels: Twin rooms from £95 (single occupancy from £85)
- 4 star hotels: Twin rooms £120 - £140 (single occupancy would be from £110)

Rates may be lowered for extended stays.



### Medical Support

Nearest major hospital – Royal Sussex County – 1km

Nearest A&E department – Royal Sussex County – 1km

Nearest sports medicine facilities – University of Brighton – Eastbourne (25km)

Nearest support with advanced scanner technology – Royal Sussex County – 1km

### Physio & sports massage

Studio57 is offering special rates to Olympic teams training at Yellowwave. The Studio57 Clinic is highly regarded in the sports industry as leading sports / fitness & postural therapists, running two of the most popular treatment rooms in Brighton & Hove. They work very closely with the majority of running and athletic clubs and sporting professionals across Sussex.

Studio57 treat everything, from initial injury, diagnosis, treatment & rehabilitation. Treatment outcome and after-care is always given. They also liaise with coaches, physiotherapists, osteopaths, GPs and other health care professionals if necessary.

Being the preferred therapists to the Brighton Brooks 10K race, the Sussex Beacon Half and the Brighton Marathon 2010, Studio57's aim is to consistently provide the very best in service and quality.

Studio 57 has four Sports Therapists, one Sports Massage Therapist, an Osteopath, a Pilates Teacher and a Nutritionist working under one roof. There are two sites available for treatment, one in Hove and the other at Brighton Marina. They also offer taping and strapping, ice therapy, preventative deep tissue massage, stretching, ultrasound and pre/post game sports massage treatments. More information can be found at [www.studio57clinic.co.uk](http://www.studio57clinic.co.uk)

## Volleyball England

Yellowwave works closely with the national governing body Volleyball England, who can assist with setting up 'friendly' matches. They are also available for advice on technical beach volleyball specific issues.

## Additional Services

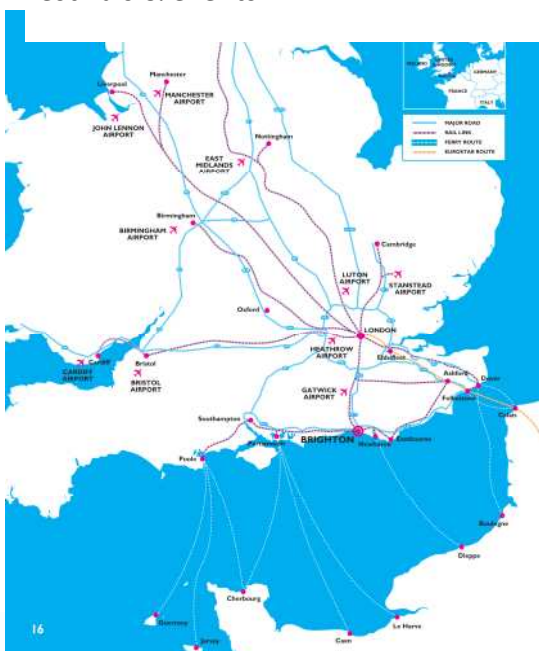
Yellowwave works closely with Brighton & Hove City Council's 2012 coordinator, the official tourism body; VisitBrighton and the other Gatwick Diamond facilities. Any additional services such as translation, security, medical, educational, press or transport requirements can generally be arranged.

## Brighton & Hove – The City



Brighton is one of the most vibrant, colourful and creative cities in Europe. Cosmopolitan, compact, energetic, unique, fun, lively, historic, young, exotic and free-spirited, it's a city like no other.

Nestling between the South Downs & the sea on the stunning south coast, Brighton offers everything from Regency heritage to beachfront cool. A fantastic mix of iconic attractions, famed nightlife, award winning restaurants, funky arts, culture & year round festivals & events.



## Getting There

Brighton is situated approx 100km (67 miles) from the Greenwich Olympic Village (travel time: 1.5hrs) on the south coast. The city is also under an hour from London and only half an hour from London Gatwick Airport. From London Heathrow airport travel time is approx 1.5hrs.

National Express offers a direct coach service between Brighton and both Heathrow and Gatwick Airports, with

a service every half hour. There is also a direct service to London Victoria Coach Station. Brighton is also easily accessible by car.

## In Brighton – Things to see and do

### Shopping & Eating



Whether you're a serious shopper, a bargain hunter, an antiques collector, a window shopper, a book lover or a music fanatic, Brighton won't let you down.

Wander through the narrow 17th century Lanes and pick up ideas for jewellery, designer clothes, interior design, kitchen ware, perfume, hats

and shoes. Stopping along the way at several of the coffee bars, wine bars, traditional English pubs, trendy sandwich shops and exclusive restaurants, you won't want to rush.

Laid back and bohemian in style, the North Laine has over 300 shops in less than half a square mile selling everything from Indonesian fabrics, retro gear, gardenware and second-hand books to hand-made rugs, Latin American furniture, percussion instruments, juggling balls and kites. For a taste of high-street shopping, visit Churchill Square, a state-of-the-art shopping mall with over 80 stores under one glass-domed roof. Or explore districts outside the city centre and discover individual flair, character and originality.

### Arts & Culture

Brighton oozes creative talent all year-round. There's a wonderful array of opera, dance, comedy, theatre, concerts, parades, poetry readings, art exhibitions and world premieres.

The range of venues is inspirational - there's comedy at the Komedia; world music, opera and ballet at the refurbished Brighton Dome; exhibitions at the Artists Quarter; jazz at the Arts Club; top stars at the Brighton Centre; pre-West End shows at the Theatre Royal and summer sounds at the seafront's Ellipse.

Art is everywhere - you'll find galleries in converted banks, renovated churches, seafront arches and stylish high-street interiors - from famous artists' originals to inspirational graduate shows.

## City Heritage



History forms a richly textured backdrop to modern day Brighton living. Walking around four hundred years of history and style unfold before you. The Royal Pavilion is the magnificent palace created by King George IV.

From the Indian Moghul-style domes of the exterior to the sumptuous Chinese interior the Pavilion is an eclectic mix of styles that has to be seen to be believed.

The Regency period is evident in the seafront squares of Brunswick and Kemp Town and a visit to the Regency Townhouse brings it all alive. Or visit Preston Manor forever preserved as home to the Edwardian gentry.

## Beachfront and Piers



Famous for its pebble beach and piers, the beachfront area offers a diverse host of attractions, day and night. Visit the Fishing Quarter with its museum, modern art trail and seafront Artists' Quarter, ride on the carousel, hire roller-blades, have a bite to eat in one of the

many cafés and bars, or simply watch the world go by from a deckchair. Brighton has two piers; the West Pier, which is slowly falling into the sea but remains an interesting glimpse of a historical pier and the main Brighton Pier which is the only pier in England open year-round and

offers free deck-chair hire. Here you can find everything from amusement arcades and fairground rides to souvenir shops, fish and chips and karaoke.

By night, the beachfront clubs are open every night of the week. In summer months there is often open-air cinema, free performances at the Ellipse area, music on the beach, and shows or concerts at the Brighton Centre.



## **Brighton Marina**

One of Europe's largest marinas and leading City lifestyle destination, this stunning waterfront development offers so much more than simply somewhere to park your boat with shopping, eating and drinking, sailing, diving, fishing, boat trips, cinema, bowling, fitness suite, casino and a stunning boutique hotel plus free parking for all marina visitors. The marina offers something for everyone and don't miss out on the array of excellent free events that are programmed throughout the year.

Brighton Marina now boast some of the best and diverse restaurants in the city, attracting not just the family market, but the young professional who wants to take advantage of the upmarket, late champagne and cocktail bars. In addition, we have the Rendezvous Casino, which offers late night entertainment, and the 26 lane bowling, and 8 screen cinema that caters for families and younger people throughout the year. Nivea Sun Yellowwave Beach Sports Venue is situated along the quieter end of the beach front between the pier and the marina.



## Venue hire costs (2011)

The venue is open to the public 10am-10pm week days and 10am-8pm weekends.

General court hire (6 court set up) is: £20/hour/court

However we recognise that teams may require the venue to be set up with Olympic size courts with 5-7m run off around the courts. If this is the case, the venue will need to be set up differently to the day to day use. We can only provide an accurate cost of hiring the courts once the team requirements are set out. We can however look into providing complimentary and / or subsidised court time. The local council would also be pro-active in providing additional support with all aspects of the visit.

If you are interested in using the Yellowwave venue please email your requirements including:

- 1) visit dates
- 2) ideal training times
- 3) size of courts required / set up
- 4) number of courts required
- 5) whether you require exclusive hire of the whole venue and if so, how long for
- 6) number of athletes in the squad

## For more information on Nivea Sun Yellowwave contact:

Elly Trimmingham, Business Administrator or Katie Mintram, Director

Yellowwave Beach Sports, 299 Madeira Drive, Brighton, East Sussex, BN2 1EN, UK

**T: +44 (0) 1273 672222**

**F: +44 (0) 1273 672700**

**E: [elly@yellowwave.co.uk](mailto:elly@yellowwave.co.uk)**

**E: [katie@yellowwave.co.uk](mailto:katie@yellowwave.co.uk)**

**W: [www.yellowwave.co.uk](http://www.yellowwave.co.uk)**

**visitBrighton**

[www.visitbrighton.com](http://www.visitbrighton.com)